

ATACH

Strategy: 2024–2028





Contents

Abbreviations

Executive summary

1. **Context and background**
2. **Vision and mission**
3. **Theory of change**
4. **Objectives**
5. **Functions and activities**
6. **Outcomes and impact**

Appendix A:

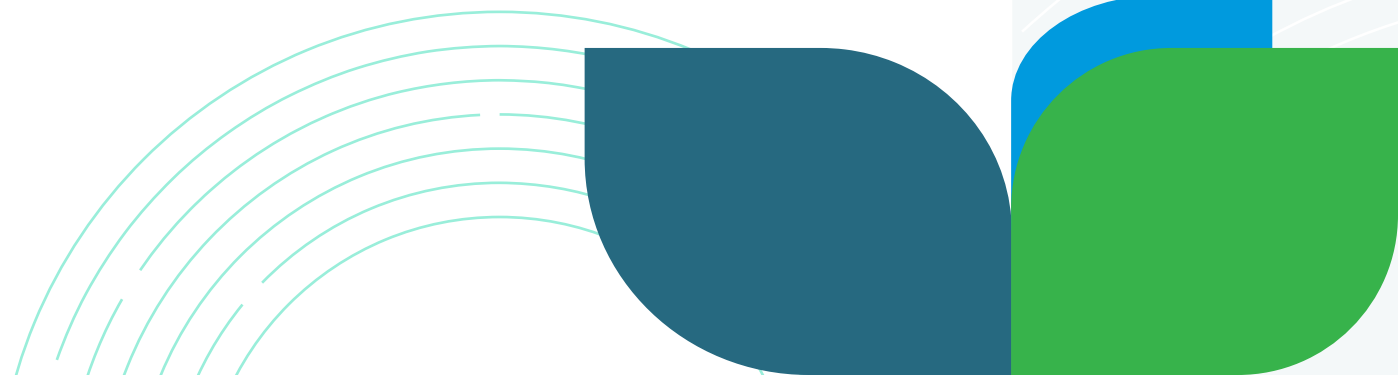
Governance and structure

Appendix B:

ATACH 2024–2026 workplan

Appendix C:

ATACH Theory of change





Abbreviations

ATACH Alliance for Transformative Action on Climate and Health

CCH Climate change and health

COP Conference of the Parties (UN Climate Change Conference)

GHG Greenhouse gas

HNAPs Health National Adaptation Plans

I-CAN Initiative on Climate Action and Nutrition

MDBs Multilateral Development Banks

NAP National Adaptation Plan

NGOs Nongovernmental organizations

SDGs Sustainable Development Goals

SG Steering Group

SIDS Small-island developing states

UN United Nations

UNFCCC United Nations Framework Convention on Climate Change

V&As Vulnerability and Adaptation Assessments

WHA World Health Assembly

WHO World Health Organization

Executive summary

Human health and the systems that protect and promote good health face unprecedented challenges due to climate change. For the health sector, facing these challenges requires urgent action to ensure that health systems are resilient and adaptable to the impacts of climate change in the short-, medium- and long-term. It will also mean reducing the health sector's contribution to climate change by decarbonizing and ensuring the long-term sustainability of health systems, including through making lower/low-carbon choices. Furthermore, the health sector and broader health community have an important role to play in shaping the actions to be taken by key health-determining sectors that facilitate the greatest health gains and advocating for their implementation.

The Alliance for Transformative Action on Climate and Health (ATACH) has emerged as a leading global network aiming to support country-level action towards building climate-resilient and low-carbon sustainable health systems, and health-promoting interventions in key health-determining sectors (e.g., nutrition, agriculture and food systems, energy, transport).



ATACH serves as a powerful platform to bring together expertise, experience, tools, and access to critical information and opportunities



The ATACH *Strategy: 2024–2028* expands on ATACH’s background and the context that precipitated its formation and first two years of operations since being launched in June 2022. It outlines ATACH’s renewed vision and mission, its key objectives, and the activities through which it aims to achieve them. Finally, the *Strategy* highlights the outcomes ATACH has set out to attain and their envisaged impact in the climate and health space.

ATACH’s work in 2024–2028 will continue to prioritize strengthening climate resilience and low-carbon sustainability of health systems (including through supply chains and integration of nutrition) and delivering commitments from key climate change and health milestones (e.g., COP27, the COP28 Declaration on Climate and Health and the World Health Assembly (WHA) Resolution on Climate Change and Health). It will also seek to shape, inform, motivate and catalyse health-promoting action in other health-determining sectors, through closer engagement and collaboration with those sectors.

ATACH engages with WHO Member States’ Ministries and Departments of Health as well as a robust network of partners to support global, regional, and country-level efforts towards these goals. The commitments made by countries at the Minister of Health level give ATACH the mandate to engage with those countries to understand their needs and priorities for increased action on climate and health. ATACH serves as a powerful platform to bring together expertise, experience, tools, and access to critical information and opportunities for increased action across geographical and disciplinary boundaries.

In the long term, ATACH’s impact will be felt in stronger health systems able to manage and bounce back from shocks and stresses, lower emissions and more coordinated action at global, regional and national level, in response to the global climate emergency across sectors resulting in better protection and promotion of global health.

The ATACH *Strategy: 2024–2028* details how these goals are to be achieved, what actions ATACH and its partners will take towards them in the next four years, and how these actions will result in effective capacity by countries to implement climate and health solutions.



1



© WHO / Ismail Taxta

Context and background

Why focus on climate and health action?

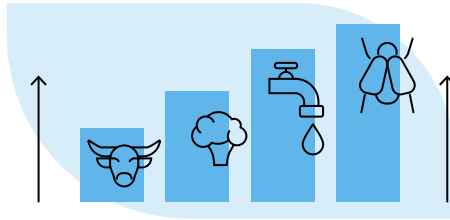
Climate change is widely recognized as one of the major challenges of our time, and the greatest global health threat of the 21st century. Its effects are already felt across the world. Floods, droughts, heat waves, famine and changed weather patterns are causing increased burdens of disease and mortality.

Some of the health impacts of climate change include:

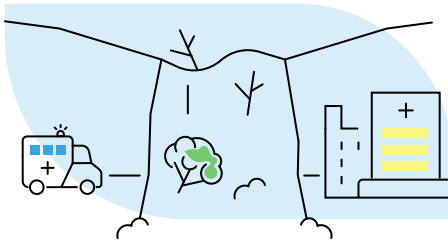
Extreme weather events causing death and illness, including through food system disruptions



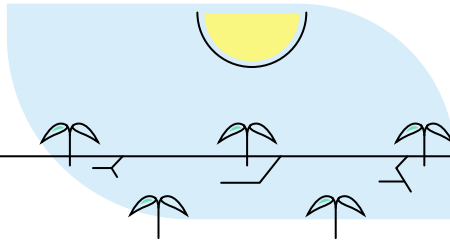
Increased levels of disease, including zoonoses, food-, water- and vector-borne diseases



Disrupted health and care services, including due to scarcity and disruption in essential environmental determinants of health (e.g. water, energy) and supplies (e.g. medicines)



Restricted food production (animal and plant health) due to climate-related crop failures leading to undernourishment and malnutrition



Other health impacts of climate change include water scarcity, mental health issues and impacts on social determinants of health (livelihoods, equality, access to healthcare and support, and social support structures).

There are many efforts underway to slow down climate change and prevent irrevocable loss. We still have the opportunity to prevent the worst impacts of climate change, protect habitats, build resilience, and strengthen our ability to adapt to future change.

Still, climate change will inevitably continue to impact the environment and our lives on this planet, with significant consequences for human health and well-being.



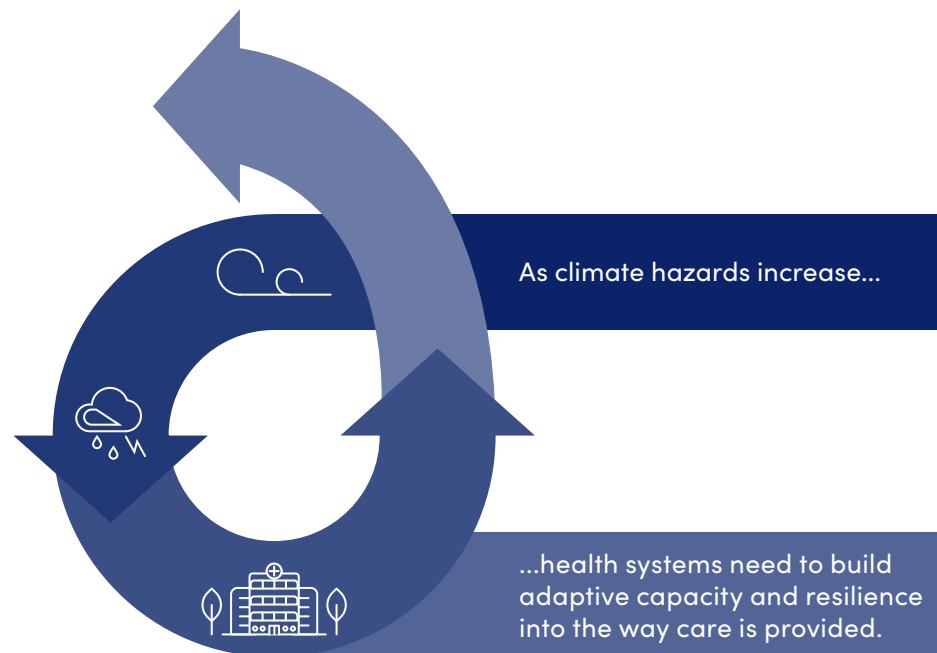
Therefore, to protect and promote health in the face of climate change, strong interventions and collective action are needed and must be urgently prioritized.



What is the role of health systems and the health sector?

Health systems are vulnerable to shocks and stresses caused by climate change. This vulnerability adds additional strain to already overburdened systems.

Moreover, vulnerability to climate change is cyclical:



Therefore, strong, adaptable health systems and healthcare facilities built for both resilience and long-term adaptability are essential to support health and well-being, now and in the future.¹



¹ Health systems, Climate-resilient health systems and low-carbon sustainable health systems are defined by WHO (in WHO Operational Framework for Building Climate-Resilient and Low-Carbon Health Systems, 2023):

- **Health systems:** The health system comprises all the organizations, institutions, people, resources and actions whose primary purpose is to improve, restore or maintain health.
- **Climate-resilient health systems:** Climate-resilient health systems are those capable of anticipating, responding to, coping with, recovering from, and adapting to climate-related shocks and stress, to bring about sustained improvements in population health, despite an unstable climate.
- **Low-carbon health systems:** Low-carbon health systems are those capable of implementing transformative strategies towards reducing GHG emissions in their operations, reducing short- and long-term negative impacts on the local global environment.

There is also a need to ensure that health systems themselves are not part of the problem, but part of the solution.

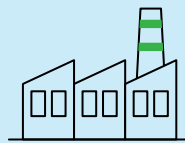
About 5% of global greenhouse gas (GHG) emissions come directly from health systems.² Those emissions originate from a number of sources including:



Energy



Vehicle fleets



Healthcare supply chains, including the production and transport of supplies and equipment



Reducing the environmental impact from the myriad of systems, institutions and personnel that make up the health sector will play an important role in building a sustainable, healthy future.

Further, recognizing that promoting and protecting health is a shared responsibility across different health-determining sectors. The health sector and the overall health community have an important role to play in shaping the health contribution of climate actions implemented by those sectors, and advocating for actions that maximize health gains. This may refer to both adaptation (e.g., water, sanitation) or mitigation (e.g., energy, food and agriculture, waste management). This begins with making a strong case for other sectors to place health and well-being as a central issue in environmental policy and decision making. This includes clearly communicating the economic, environmental, social and equity-related benefits of doing so.

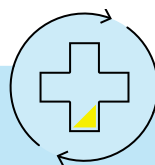
Health systems and human well-being are heavily affected by climate change on multiple fronts. These impacts are likely to continue into the foreseeable future. Health systems may struggle to cope with the increased health burdens caused by climate change, but they are also responsible for approximately 5% of global GHG emissions and must take action to minimize their contribution to this problem, as part of their duty to “do no harm.” It is urgent to intervene in this cycle to create more sustainable, adaptable and resilient health systems around the world, while also working collaboratively with other health-determining sectors to ensure a broader systems approach. The health sector can play a strong role in leading by example, while bringing global attention to the intersections between climate change and health.

² Romanello M, di Napoli C, Green C et al. The 2023 report of the Lancet Countdown on health and climate change: the imperative for a health-centred response in a world facing irreversible harms. Lancet 2023; published online Nov 14. [https://doi.org/10.1016/S0140-6736\(23\)01859-7](https://doi.org/10.1016/S0140-6736(23)01859-7)

How has ATACH emerged and evolved in this context?

In response to the growing global awareness of the importance of the climate change and health nexus, a health programme was introduced at COP26 in November 2021 under the leadership of the United Kingdom as the COP26 Presidency (as a programmatic priority, rather than as part of the negotiated COP26 outcome). **Countries were invited to make two commitments articulated under the health programme:**

Commitment 1: Climate-resilient health systems



Countries committing to climate-resilient healthcare systems undertook to:

- **Conduct climate change and health Vulnerability and Adaptation Assessments (V&As)** at a population and/or health facility level;
- **Develop Health National Adaptation Plans (HNAPs)**, informed by these assessments; forming part of a National Adaptation Plan (NAP); and
- Use the V&As and the HNAPs to facilitate access to climate change funding for health.

Commitment 2: Low-carbon sustainable health systems



Countries committing to low-carbon sustainable health systems undertook to:

- **Set a target date for net-zero emissions** in the health system (for high-ambition or high-emitting countries);
- **Deliver a baseline assessment of emissions** from the health system, including supply chains; and
- **Develop an action plan or roadmap** towards a low-carbon sustainable health system.



Approximately **50 countries** committed to the COP26 Health programme at the Minister of Health level by **COP26**.

This ambitious agenda called for a collaborative mechanism to drive the needed changes and implementation at pace and scale. **The Alliance for Transformative Action on Climate and Health (ATACH) was formed in June 2022.**

Creation of ATACH

ATACH was created to bring together governments and key stakeholders on a global platform. 84 countries and over 70 partners joined ATACH in its first two years, making it truly worldwide in its reach.³

The ongoing evolution of ATACH

Since its establishment, ATACH and its partners have led the way in keeping climate and health on global agendas.

It has made key contributions to international efforts, many of these via opportunities and platforms offered through UNFCCC and WHO processes, broadening the scope and reach of ATACH from the initial COP26 health programme commitments, but retaining its overarching aim of supporting action towards climate-resilient and low-carbon sustainable health systems.

ATACH has played a key role in raising awareness and driving momentum, which has elevated the climate and health agenda to centre stage. Thus far, it has served as a space for:

- the exchange of information, tools and expertise;
- supporting countries and partners to access resources;
- building collaborative efforts; and
- enhancing technical and political cooperation.

³ A current list of ATACH countries can be viewed here: <https://www.atachcommunity.com/atach-community/countries-and-areas/>. A current list of ATACH partners can be viewed here: <https://www.atachcommunity.com/atach-community/partners/>



Eighty-four countries and over 70 partners joined ATACH in its first two years, making it truly worldwide in its reach.



Evolution of ATACH, with growing attention on climate change and health (CCH)



2021

COP26

UK establishes COP26 Health Programme raising ambition on Climate-Resilient and Low-Carbon Sustainable Health Systems.



November 2022

COP27

Egypt as COP27 Presidency launches Initiative on Climate Action and Nutrition (I-CAN). I-CAN integrated into ATACH.



May 2024/25

WHA 77/78

77th World Health Assembly Climate change and health resolution (ATACH referenced).
78th WHA Global Action Plan on Climate and Health adopted.



2025

COP30

Belem Action Plan



ATACH formed

ATACH is formed to support country-level and global delivery of climate-resilient and low-carbon health systems.

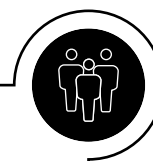
June 2022



COP28

COP28 UAE Declaration on Climate Change and Health endorsed by 151 Member States. ATACH referenced in declaration as a key collaboration initiative.

November 2023



COP29

Baku COP Presidencies Continuity Coalition COP29 Declaration on Multisectoral Action Pathways to resilient and healthy Cities

November 2024



100 countries*
95+ partners

*as of
October 2025

Evolution of ATACH, with growing attention on climate change and health (CCH)



In **November 2022, COP27** saw the launch of the Initiative on Climate Action and Nutrition (I-CAN) under the leadership of Egypt as COP27 President. I-CAN was integrated into ATACH broadening its initial focus on the COP26 health programme to links and intersections with other key health-determining sectors and systems. I-CAN's role is to build awareness of the links between climate change, health and nutrition, and to bring Member States and partners together to drive solutions to interlinked problems at this intersection.



At **COP28 in November 2023**, 151 countries endorsed the historic COP28 UAE Climate and Health Declaration, with countries committed to pursuing “strengthen[ed] trans- and inter-disciplinary research, cross-sectoral collaboration, sharing of best practices, and monitoring of progress at the climate-health nexus, including through initiatives such as the Alliance for Transformative Action on Climate and Health (ATACH)” and “to convene regularly with diverse line-ministries and stakeholders to foster synergies and strengthen national and multilateral collaboration on climate change and health, including through the ATACH initiative”. ATACH is also closely linked to the Global Goal on Adaptation, the Sharm-El-Sheikh Adaptation Agenda and the Guiding Principles on Financing and Climate Health Solutions.



Building on this momentum, Member States at the **77th World Health Assembly in May 2024** adopted a landmark resolution on climate change and health. Climate change was also included as a strategic priority in WHO's Fourteenth General Programme of Work to be implemented across all WHO programmes.

The evolution of the climate and health space requires that ATACH's structures, work, and approaches must also evolve to remain effective, responsive and relevant for countries' priorities and needs, necessitating a renewed strategy to guide the next phase of ATACH.

ATACH Highlights and Achievements 2022–2024

Climate assessment report disseminated



Assessment report of climate finance barriers and challenges developed and disseminated

Baseline assessment published



Baseline assessment of status against the COP26 Health Commitments developed and publicized

Community of Practice website launched



ATACH Community of Practice website launched with resource repository, case studies, country progress tracking against commitments, news and events, members area; resources assessed for quality and relevance

High-profile events held



High-profile events held to drive forward momentum at COP27 and including a full ATACH Day at the COP28 Health Pavilion, including ATACH General Meetings in 2022, 2023 and 2024; as well as meetings of five ATACH working groups

30+ countries commit



An additional 30+ countries commit to building climate-resilient and low-carbon sustainable health systems at the Minister of Health level since COP26 Health Programme launch

2.

Vision and mission



© WHO / Blink Media - Tali Kimelman

Over the next 4 years from 2024 to 2028, ATACH will maintain its focus on promoting, supporting and advancing action at the country-level on building climate-resilient and low-carbon sustainable health systems (including supply chains and integrating nutrition into the climate-health nexus) while also seeking to define and inform health-promoting action by other key health-determining sectors.

ATACH's vision

The **vision of ATACH** is a world where health systems are built and equipped to manage the impacts of a changing climate without contributing to worsening its impacts, and in which the health sector works collaboratively with other health-determining sectors to protect and promote health in the face of climate change.

ATACH's mission

The **mission of ATACH** is to protect and promote population health in the face of climate change by supporting the development of climate-resilient and low-carbon sustainable health systems worldwide, ensuring that the climate change and health nexus is integrated into cross-sectoral national, regional and global plans, and that climate change and health interventions can be practically implemented.

We aim to achieve this by:

- mobilizing the collective power of national governments and partners to influence shifts in global climate and health policy and motivate evidence-based action;
- promoting cross-sectoral collaboration and alignment between actors and initiatives;
- monitoring collective progress;
- facilitating access to financing; and providing an active and responsive platform for sharing and accessing knowledge, resources (technical and financial), expertise, and experiences.



Today, ATACH is one of many climate and health initiatives, but one of the only ones convened around country needs and priorities for implementation.

What sets ATACH apart from other initiatives?

When ATACH was initially established, it was the first partnership focused on increased action on climate and health by countries. It has played a key role in raising awareness and interest in this agenda. Today, ATACH is one of many climate change and health initiatives but probably the only one convened around country needs and priorities for implementation. More such initiatives and networks have recently emerged and are likely to emerge in the future, at global, regional and country levels. ATACH is not intended to replace or “compete” with existing initiatives: rather, it aims to promote cohesion and collaboration between activities seeking to build health sector climate-resilience and low-carbon sustainability and to inspire health-promoting action by other sectors, particularly in countries/areas actively committed to ATACH. It also supports and encourages the formation of new country-level and regional initiatives to deliver on global climate and health priorities.

ATACH has a mandate from participating countries to identify needs and priorities and to support implementation. To achieve this, it acts as:



An **advocate** to catalyse action and build global momentum for the climate change and health agenda;



An **interface** for knowledge exchange, capacity building, learning and collaboration;



A **platform** to identify and consolidate needs, encourage joint progress, align actions, and facilitate access to support and finance;



A **catalyst** for investment and resources for effective use of climate and health finance.

ATACH is in a unique position to fulfil these roles because it is the only international body able to leverage the collective power of WHO Member States, as well as a wide range of partners, organizations, and institutions. It is underpinned by the institutional power and wide reach of WHO, and supported by a broad range of partners and experts who include major funders, research entities, NGOs and civil society organizations, MDBs, and advocacy groups, among others.

As a result, ATACH has the power to act as a **truly global, inclusive platform** to bring together **knowledge, experience** and **expertise**.



3

Theory of change



© WHO / Felix Marquez

Given climate change is considered the greatest threat of this century to human health, and will be felt through multiple and interconnected channels, **if** countries build climate resilience in health systems **and** reduce their greenhouse gas emissions from health operations **while** shaping and advocating for health-promoting action in other health-determining sectors **then** health will be better protected and promoted in the face of climate change, **because** health systems and health-determining sectors will have shifted their priorities towards reducing risks to health.

The theory of change is made up of the components below, which together outline how ATACH's efforts contribute to long-term impact.



Objectives



Functions



Outcomes



Impact

ATACH Theory of change

The problem: Climate change is already impacting population health, including via impacts to key health-determining sectors. This compromises health systems' ability to protect and promote health. Meanwhile, health systems contribute to a sizable proportion of global GHG emissions, exacerbating the impacts of climate change. Investment and efforts (both adaptation and mitigation) are needed to address these challenges.

See the full Theory of Change table in [Annex C](#)



ATACH mandate

To identify country needs and priorities and to increase health-promoting climate action



Functions



Advocacy and agenda-setting



Alignment and coherence



Finance



Knowledge generation, sharing and capacity building



Monitoring and tracking



Outcomes

1

A shift in international priorities

2

Alignment and intersectoral collaboration

3

Funding

4

Capacity, evidence, guidance and tools

5

Progress



Impacts



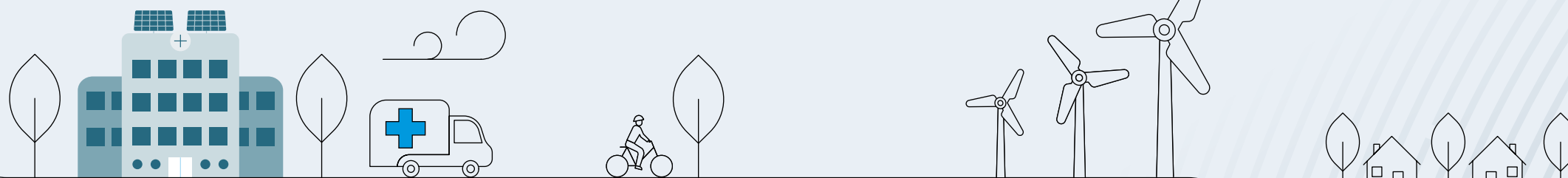
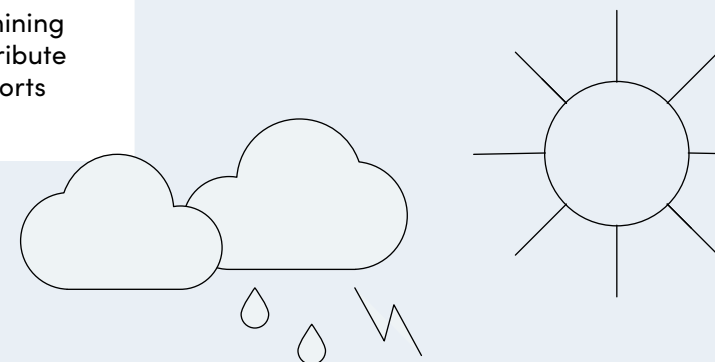
Improved adaptation and climate resilience of health systems



Reduced GHG emissions from health systems



Health protected and promoted through cross-sectoral collaboration



4. Objectives

ATACH acts as a catalyst, interface, platform, accountability partner, and advocate for the work of countries/areas and partners. It supports and enables work happening at a country level, to help members progress towards meeting the climate and health commitments and priorities. It also serves as a platform for collaboration and cohesive action, bringing together experiences and expertise from across the globe.

ATACH has four major objectives enabling the Alliance to fulfil this role:

- 1 Advocate for and enable concrete, ambitious commitments and priorities on climate change and health
- 2 Promote information sharing and partnership building among actors and sectors to facilitate coordination and alignment of efforts
- 3 Support countries to deliver on commitments and priorities through access to financial and technical support and by promoting evidence-based best practices, knowledge and innovative solutions
- 4 Track and measure collective progress towards climate-resilient and low-carbon sustainable health systems and health-promoting action in other sectors through standardized approaches



Objective 1

Advocate for and enable concrete, ambitious commitments and priorities on climate change and health

As a first objective, ATACH advocates for and enables countries to set concrete, ambitious commitments and priorities towards building climate-resilient and low-carbon sustainable health systems.

In pushing for greater commitments and engagement at this level, ATACH aims to:

drive the cross-sectoral political will required to ensure that the climate change and health nexus is mainstreamed across national, regional and global levels.

Having clear commitments and priorities can also encourage coordination and collaboration between different sectors, countries/areas, organizations and international bodies, delivering for instance on climate goals and the Sustainable Development Goals (SDGs) simultaneously.



Example: advocacy in UNFCCC Processes

Meeting this objective requires **high-level engagement** and **building international visibility** for the climate-health nexus. Public, high-profile support on the international stage for urgent action on climate and health is key for motivating country-level support for health systems wishing to take action.

At COP28 in December 2023, for example, ATACH hosted the inaugural ATACH day in the COP28 Health Pavilion. This was an opportunity to inspire further action towards climate-resilient and low-carbon sustainable health systems by sharing best practice examples from ATACH's network of countries and partners. It was also an important space to consolidate ATACH's role in advancing the historic COP28 UAE Climate and Health Declaration.



Objective 2

Promote information sharing and partnership building among actors and sectors to facilitate coordination and alignment of efforts

While making commitments and establishing national agendas are key steps, it is equally important to foster an enabling environment for practical action, where actors are aligned and coordinated in their efforts. This is particularly important with growing interest in the climate and health nexus with new and emerging actors entering the space at a rapid rate creating the risk of misalignment or duplication of efforts.

ATACH aims to:

promote and facilitate the coordination of efforts by providing a transparent platform for information sharing and partnership building between initiatives and actors in the health sector and in key health-determining sectors aiming to **advance climate change and health action at country level** (while ensuring that countries are emboldened and equipped to own and lead their priority climate change actions).



Objective 3

Support countries to deliver on commitments and priorities through access to financial and technical support and by promoting evidence-based best practices, knowledge and innovative solutions

ATACH supports countries and regions in delivering on their commitments to build climate-resilient and low-carbon sustainable health systems, working towards decarbonizing health systems' operations, and shaping and maximizing positive health gains by actions in other sectors, by acting as a platform to facilitate information sharing, capacity building, access to technical support, and access to funding. This allows members to more easily learn from each other, and to access the information and tools they need to meet the climate and health commitments.

ATACH identifies, promotes and disseminates evidence-based knowledge and best practices to support stronger global action on climate change and health, as well as its co-benefits.

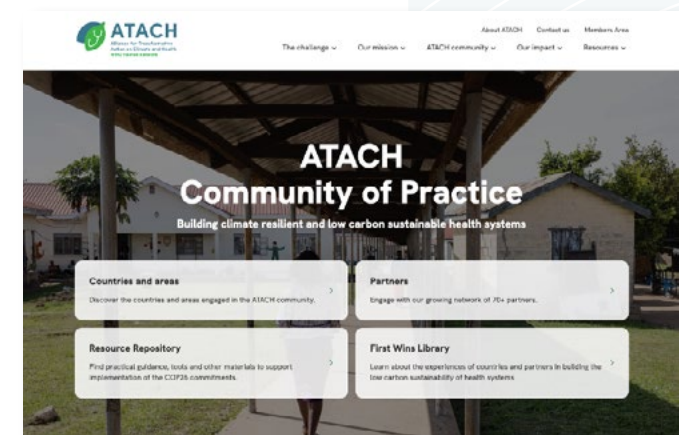
ATACH aims to:

- Serve as a repository for tools, data and expertise. Members can draw on this shared repository to progress towards meeting their climate and health commitments, or to identify and share opportunities for new interventions.
- Identify and address knowledge and capacity gaps to inform new research and capacity building agendas and initiatives.



Example: the ATACH Community of Practice

The Community of Practice is ATACH's hub for sharing information and tools, connecting members to each other, and documenting ATACH's growing impact. The Community of Practice resource library publicizes new research, guidance, technical tools, and countries' experiences, building an archive of evidence-based best practices.



Objective 4

Track and measure collective progress towards climate-resilient and low-carbon sustainable health systems and health-promoting action in other sectors through standardized approaches

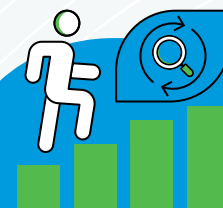
Monitoring the progress of ATACH Members' performance against their commitments and priorities is required to assess progress towards climate-resilient and low-carbon health systems and societies.

Through tracking progress, ATACH aims to:

identify if there is political engagement and support to implement relevant actions and track the performance of funds destined to the implementation of adaptation and mitigation policies.

Having oversight of where progress is being made can also help identify gaps and where more support or efforts might be required.

Furthermore, tracking progress can highlight standards and best practices required for the designed interventions, assessments, plans, and programmes, allowing the provision of advisory and support services, if needed, to (re)structure the delivery of commitments and priorities, in a timely and sustainable way.



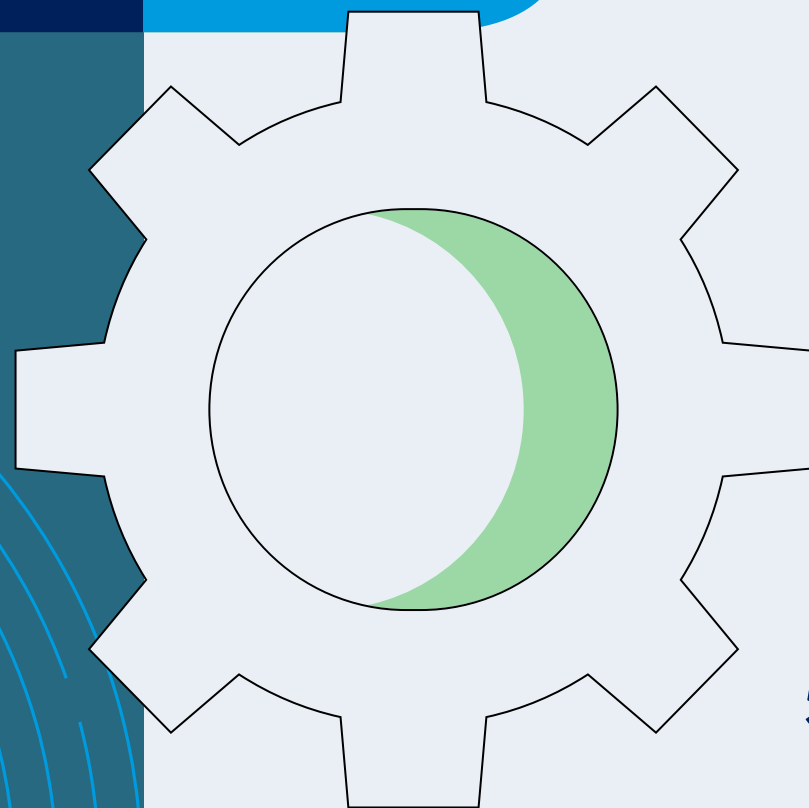


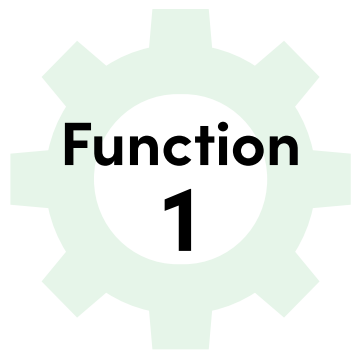
5.

Functions and activities

ATACH meets its objectives through five key functions:

- 1 Advocacy and agenda-setting
- 2 Promoting alignment and coherence
- 3 Promoting access to finance
- 4 Knowledge generation, sharing and capacity building
- 5 Monitoring and tracking





Function 1

Advocacy and agenda-setting

One of ATACH's key functions is to:

deliver an international shift in climate and health policy and practice, drawing on the collective power of its member states.

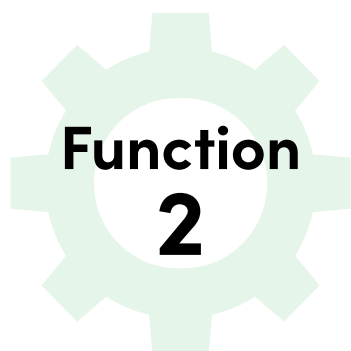
This function requires high-level international advocacy, ensuring that the climate and health agenda remains a high priority at all governance levels and across mandates.

This high-level advocacy requires highlighting the health and associated economic benefits of investing in climate adaptation and mitigation initiatives and driving meaningful cross-sectoral action at the climate and health nexus. To this end, ATACH participates in relevant events such as COP and the World Health Assembly. It will also continually engage with communities and nongovernmental organizations, ensuring coherence and clear messaging to drive policy change.



Indicative activities

- Set a calendar of strategic events for ATACH engagement and prepare key messages for these for use by ATACH members and high-level supporters.
- Launch and implement a communications strategy that seeks to elevate ATACH messages and demonstrate action and progress being made by countries ([Appendix A](#)).
- Develop thought leadership with members to highlight trends and opportunities in the climate and health space.
- Bring together health sector agencies and partners to encourage alignment and collaboration on health and climate change.
- Identify key nexus points with other climate-informed and health-determining sectors and policy areas where the health sector can play a stronger influencing role.



Function 2

Promoting alignment and coherence

Coherent and aligned global action towards climate and health goals is only possible if countries and organizations can connect with each other to develop collaborative action.

A core function of ATACH is to:

act as a platform, interface, and catalyst for collective action and for sharing experiences.

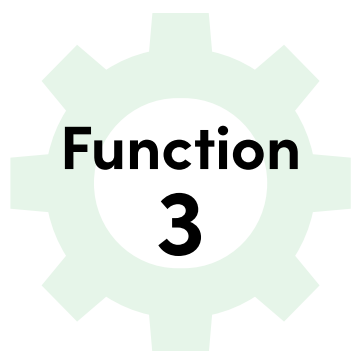
Through this function, ATACH works to ensure that partners are not duplicating efforts nor working in silos in circumstances where powerful coordinated action is called for.



Indicative activities

- Collect, update and share information on technical partners' initiatives to support countries through the Community of Practice, ATACH events and meetings, and regular communications.
- Develop guidance to promote alignment in standards and approaches - for instance, on indicators for climate-resilient and low-carbon sustainable health systems and sustainable procurement standards - and continue to promote guidance that has been developed already.





Function 3

Promoting access to finance

Impactful interventions require accessible finance.

One of ATACH's key functions is:

identifying financing needs and supporting countries – particularly middle- and low-income countries – to access finance for prioritized climate and health interventions.

This requires identifying and dismantling barriers preventing health-oriented finance from properly incorporating climate considerations. It also requires strategies enabling climate finance to be accessed for health. This is strongly related to ATACH's core advocacy functions, working to keep interlinked health and climate conversations on the table between actors across sectors, and between and within countries.

Through the Community of Practice, ATACH provides and shares guidance and resource materials to help countries access the necessary funding. This includes helping to identify appropriate partners and sources for different kinds of investments and projects.



Indicative activities

- Map available knowledge and resources on “best buys” for climate change and health intervention to shape a priority research agenda.
- Generate guidance on cost and prioritization of climate and health interventions, supported by evidence on cost-effectiveness.
- Facilitate improved understanding of the role of private or blended financing to support climate and health implementation.
- Develop and maintain a mapping of financing initiatives and provide information on how to access them.
- In-country planning and access: Foster in-country coordination and complementarity by bringing the different actors, organizations, communities, civil society etc. around the table with the governments to plan together and exchange information on available resources and finance and how to access them.

Function 4

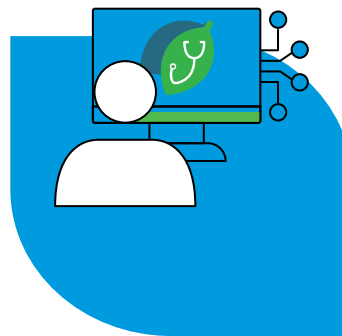
Knowledge generation, sharing and capacity building

ATACH acts as a platform to share experiences, expertise, and build regional and local capacity.

In addition to generating tools, guidance, and other resources through the collective input of members, **ATACH has a key role enabling the sharing and dissemination of existing tools between partners and countries in the network.**

Effective knowledge sharing enables the assessment of case studies and experiences from ATACH members and partners to identify and disseminate best practices, implementation strategies, and lessons learned.

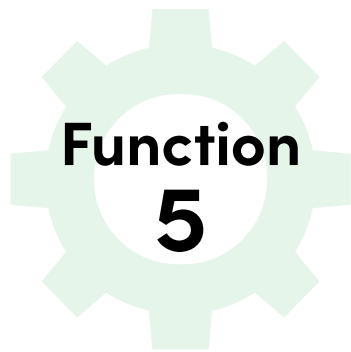
Furthermore, ATACH is strongly positioned to facilitate capacity building to support operationalization of resources and knowledge shared through workshops, virtual and face-to-face trainings, and other activities. ATACH is also well placed to identify gaps and potential partnerships to fill these. Towards realizing this function, the online Community of Practice and technical meetings provide crucial spaces for sharing knowledge, information and tools, as well as evidence and experience.



Indicative activities

- Update the ATACH Community of Practice with key country documents, resources, case studies and other relevant materials.
- Organize a programme of technical meetings on key CCH-related topics.
- Develop and disseminate guidance for key CCH activities, including conducting V&As, assessing GHG emissions of health systems, and enhancing integration of nutrition in climate-health policies and plans.





Function 5

Monitoring and tracking

Through WHO's climate change and health monitoring role: (including the WHO Health and Climate Change Global Survey), **ATACH supports countries and partners to assess progress towards climate and health commitments and priorities. ATACH also measures progress made as a collective platform towards its goals.**

ATACH's wide reach and inclusive nature provide an opportunity to consolidate and share information about global progress towards climate and health goals. This function also enables partners to learn from one another by sharing experiences, and monitoring data and outcomes. This type of aggregated monitoring also provides a strong basis for advocacy. Further, the continued assessment of country needs and priorities allows ATACH to identify country needs and priorities for increased action at country level.

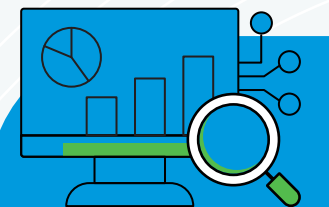
ATACH's role is not to monitor partners' actions directly but, rather, to support and encourage countries to conduct their own monitoring in a format that can be collated and compared. This function also includes tracking and measuring the collective impact and progress of ATACH in supporting implementation at country level.



Indicative activities

- Develop an annual report that assesses progress by ATACH countries on implementation of commitments and the collective progress of ATACH in supporting countries. All ATACH members will be invited to provide annual updates on support provided to countries and additional relevant information (e.g., development of tools or guidance).
- Update the ATACH Community of Practice with information on country progress and support provided by members.

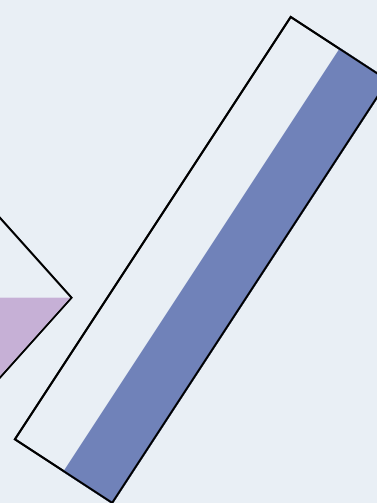
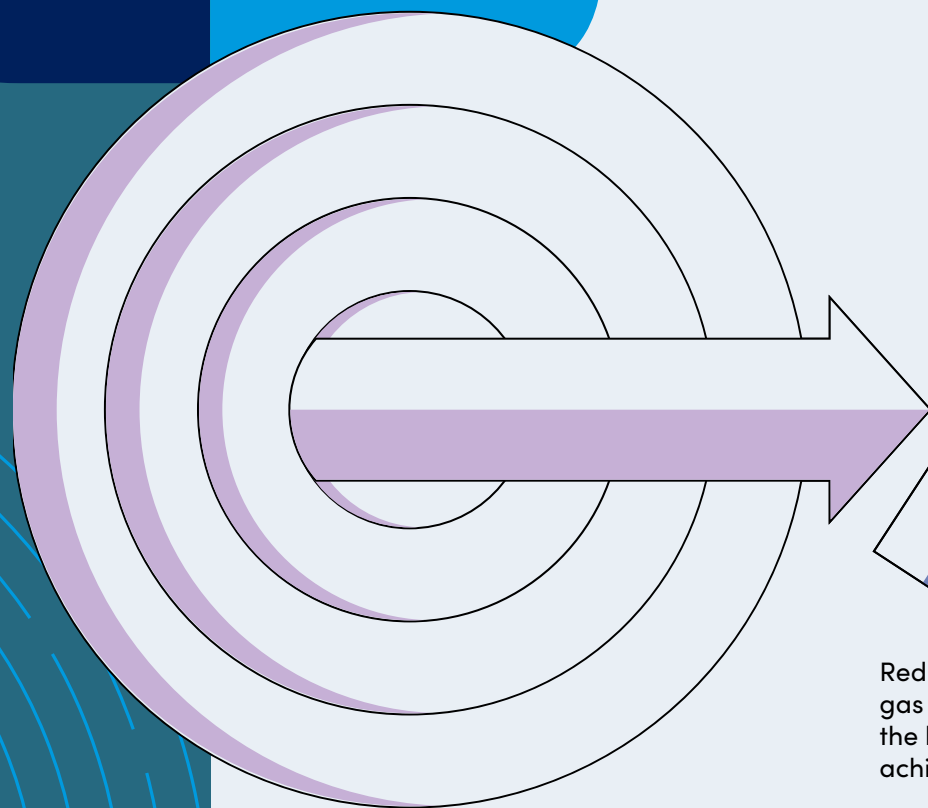
Appendix B includes the ATACH workplan for 2024–2026, which provides further detail on how these functions will be delivered and actioned.



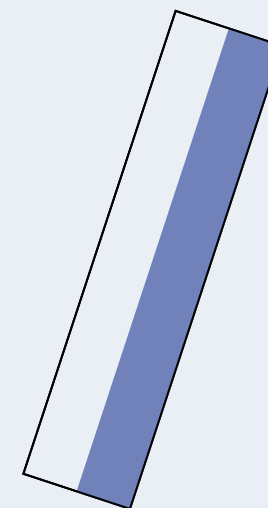


6. Outcomes and impact

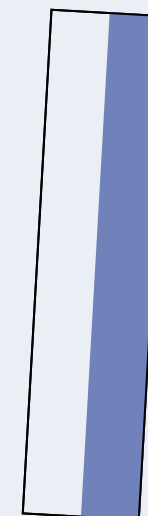
As outlined in the Theory of Change, ATACH envisages five key high-level outcomes from meeting its objectives. All five outcomes represent sustained and impactful progress towards:



Reducing greenhouse gas emissions within the health sector to achieve net-zero goals



Increasing the climate-resilience and adaptation of healthcare facilities and systems



Shaping and advocating for health-promoting actions by key health-determining sectors in the face of the climate crisis

Outcome 1

A shift in international policy and programming

As a result of its work, ATACH envisages a major shift in international policy and programming where the climate and health agenda is raised as a priority in the health sector and in other health-determining sectors.

This requires **increased multi-sectoral alignment, collaboration and delivery on the climate and health commitments and priorities** of countries.

This collaborative effort will become more possible as more countries set climate and health commitments and priorities for action and join ATACH, and as the network of ATACH partners expands.



Outcome 2

Alignment and collaboration between climate change and health actors and initiatives, and other relevant sectors

As new players enter and emerge in the climate and health space, the risk of duplication of efforts and misaligned or siloed support to countries is raised.

ATACH acts as an **inclusive entity** which aims to **inform actors of each other's initiatives and work**, so that alignment and collaboration can be facilitated.

Where gaps are identified (for instance in research, policies, processes or approaches), ATACH can support in bringing together actors to collaboratively address these.

Outcome 3

Funding and investment for climate and health is available to and accessed by countries

A key outcome of ATACH's work includes both helping countries and partners access available funding through established instruments and supporting the establishment of new routes to financing climate and health interventions.

This includes:

identifying specific needs and priorities at country level; identifying and addressing barriers faced by the health sector in accessing climate funding; and keeping health considerations at the forefront of climate financing agendas.

While identifying and catalysing funding for specific interventions is a priority, part of ATACH's mission will be to articulate a narrative about the variety of work needed and the range of different potential funding sources to achieve it. The purpose of this broadened narrative is partly to grow awareness of what kinds of funding exists beyond the obvious, as well to mobilize donors and other stakeholders around country needs and priorities for investments and delivery.





Outcome 4

Capacity, evidence, guidance and tools to support countries' progress is available from a dynamic and growing Community of Practice

ATACH supports the development of an openly accessible repository of information and practical guidance and tools for countries as they progress towards the climate and health commitments and delivering their priorities.

The online Community of Practice will make technical products, guidance documents and tools developed by ATACH members freely available for sharing. All tools and products will have been mapped and reviewed to ensure they are practical and effective to support countries' efforts, including around capacity building and financing.

Supplementing this will be opportunities to convene in meetings to discuss practical approaches and experiences, which may build on existing evidence, guidance and tools.



Outcome 5

Progress is made by ATACH members and ATACH collectively towards climate change and health action

One of ATACH's roles is to act as an accountability partner for countries and partners as they map progress towards the realization of commitments and priorities.

Using transparent monitoring and evaluation tools and mechanisms, ATACH and its partners will be able to **assess collective and country-level progress.**

A shared set of indicators will be developed and used to assess country-level progress and outcomes of interventions, with the information made readily available through the ATACH Community of Practice platform.

Long-term impact

If ATACH meets the outcomes it has set out to achieve, it will have a meaningful and measurable impact on both health and climate resilience at country- and global levels.

Major anticipated areas of impact include:

Improved adaptation and resilience of health systems to climate change

Stronger evidence-based tools, shared knowledge and technical know-how, and increased access to funding will allow health systems to adapt more effectively to climate change-related threats. Health systems are set to build greater resilience to climate change impacts and can deliver essential high-quality care and services in changing conditions.

Reduced GHG emissions from health systems

Evidence-based tools, strong monitoring and evaluation mechanisms, and access to funding to support new technology, technical tools and practices leading to a measurable reduction in emissions from health sector sources, including supply chains. In some cases, net-zero emissions may be achieved, while in others – especially in regions with limited resources – low-carbon health systems will serve as a more achievable goal. Although country-level markers may differ, the global impact is lowering overall emissions from the health sector.

Health protected and promoted in the face of climate change through cross-sectoral collaboration

As health systems are better equipped to manage climate risks and reduce their contribution to global emissions, the overall capacity of health systems to protect and promote health in the face of climate change is strengthened. More climate-resilient health systems which cause less damage to the global environment can also inspire and inform complementary action in other health-informing sectors, leading to broader systems which are better at promoting, protecting and improving health outcomes.



Health systems are set to build greater resilience to climate change impacts and deliver essential high-quality care and services in changing conditions



Appendix A:

Governance and structure

Structure overview

Following its first two years of operations, ATACH has transitioned to a new governance and operational structure to better address country implementation needs in climate change and health. The main governance and operational mechanisms of ATACH are summarized below and detailed in subsequent sections.

ATACH membership

ATACH membership is open to the following organizational categories:

- Countries/Areas (represented by Ministries of Health)
- Other Ministries, Government Institutions or Agencies of Countries/ Areas with a mandate for responsibilities relevant to Climate Change and Health;
- Intergovernmental organizations (including multilateral and UN organizations);
- Global climate or health financing mechanisms;
- Non-State Actors with a demonstrated interest in climate change and/or health, including:
- Nongovernmental organizations (including civil society groups);
- Private-sector entities, represented through international business associations;
- Philanthropic foundations;
- Academic and research institutions.

Requests for ATACH membership are made on an organizational level to WHO as the ATACH Secretariat, and approved by the Secretariat based on WHO rules, responsibilities and processes. More information is available on the "[Join the ATACH](#)" page on the ATACH Community of Practice.

Responsibilities of ATACH Members include:

- Promote the work, vision, goals and objectives of ATACH;
- Actively participate in ATACH activities, discussions and deliberations;
- Participate, as appropriate, in the ATACH General Meeting and other relevant events;
- Participate, as appropriate, in ATACH task teams;
- Share knowledge and information (lessons learned, case studies, programme results, etc.) with other ATACH members as appropriate, including through contributions to the ATACH Community of Practice website.

Co-conveners

The co-conveners include WHO and United Kingdom as the founders of ATACH on a permanent basis and two COP Presidencies (both current and upcoming), in this case UAE and Azerbaijan (TBC) on a temporary basis. Other conveners may be appointed on a temporary basis by WHO in consultation with existing co-conveners, based on their comparative advantage to contribute to the goals of ATACH.

The co-conveners provide momentum and leadership to ATACH, identify opportunities and support ATACH to meet the agreed purpose, objectives and functions.

Responsibilities of co-conveners include:

- Facilitate engagement with Member States, UN Agencies and other key stakeholders;
- Engage potential new ATACH members and high-level supporters;
- With the support of the Secretariat, convene general ATACH meetings;
- Actively participate in the ATACH Steering Group.

Steering Group

The ATACH Steering Group (SG) serves as a governing body for ATACH. It includes representation of countries, ATACH co-conveners and key stakeholder constituencies in climate change and health, with a mandate to represent the views of the broader ATACH membership.

The list of current Steering Group Members (2025 Term) is available [here](#).

Composition overview

The SG is composed by **21 representatives** of ATACH co-conveners, key stakeholder constituencies in climate change and health, bilateral donors to ATACH and, importantly, countries across all WHO regions. The composition of the ATACH SG can be summarized as follows:

- **Countries** are central to the work and mission of ATACH. The SG has at least **6 country representatives**, including at least one country representative per WHO region and may add more representatives to ensure balance between income groups, gender, small-island developing states (SIDS), etc. Country representatives should consider the needs and priorities from the broader region ensuring bottom-up considerations for ATACH priorities and work.
- **Co-conveners** of ATACH are represented on the Steering Group by **4 representatives**. These include the two founding members of ATACH (United Kingdom and WHO) on a permanent basis and two COP Presidencies (most recent and forthcoming) on a rotating basis. Other co-conveners may be considered if relevant to the work of ATACH.
- **Bilateral donors** to ATACH are also represented by **2 representatives** in the Steering Group.
- **Constituencies** represent the broader ATACH membership with **9 representatives** in the Steering Group (1 per key constituency). Representatives of the constituencies have an advisory role within the Steering Group. They are expected to take into consideration and represent the views of their entire constituency. Key constituencies include:
 - Philanthropies and Foundations
 - Nongovernmental Organizations (NGOs)
 - Private Sector Alliances
 - Health Professional Associations
 - Academic and research institutions
 - Global Climate Financing Mechanism
 - Global Health Financing Mechanism
 - Multilateral Development Banks (MDBs)
 - UN Agencies

Selection and tenure

- Constituency representatives are selected by the Secretariat based on expressions of interest received following established criteria. Selection should strive for balanced representation across geographic areas, resource-levels and gender.
- Constituency representatives serve a 1-year term in the SG, renewable for up to 3 years. Renewal decisions are made by the Secretariat in consultation with the SG, taking into account progress made by ATACH and future needs, and striving to ensure staggered renewals, whereby incoming and outgoing representatives overlap for one meeting to maintain continuity.
- Constituency representatives are responsible for engaging with their relevant constituencies and representing their views at a strategic level in the SG.

Responsibilities of Steering Group members include:

- Attend SG meetings (biannually). Where attendance is not possible by the SG representative, an appropriate deputy from the same organization should be identified to attend;
- Provide strategic advice on ATACH's role, long-term priorities and overall strategy to achieve its goals;
- Provide the overall strategic direction for the operational work of ATACH, representing priorities and views of their constituency group;
- Approve the creation of specific task teams, and provide recommendations of potential additional task teams to be created;
- Contribute to the development of the ATACH Strategy and theory of change;
- Approve the strategy, the workplan and annual updates, contributing inputs on behalf of their constituency group;
- Approve high-level champions;
- Consider ATACH progress and impact and provide recommendation for adjusting the strategy as required;
- Assess the progress report by task team leads so as to better advise on ATACH operational mechanism's approach.

The ATACH Steering Group will aim to operate by consensus. When consensus is not possible, the issue will be discussed by countries through the convening of WHO Regional Offices and a final decision will be taken by the Secretariat in accordance with its rules, policies, procedures and practices.

Secretariat

WHO serves as the Secretariat of ATACH. Secretariat support is provided in accordance with the WHO Constitution and General Programme of Work, WHO's Financial and Staff Regulations and Rules, WHO's manual provisions, and WHO rules, policies, procedures and practices.

The Secretariat reserves the right not to implement any ATACH activity which it determines gives rise to undue financial, legal or reputational liability or is contrary to WHO policies, regulations and procedures.

The responsibilities of the Secretariat are summarized into key categories below and refer to:

General Operations and Governance

- Serve as the interface between ATACH and its members;
- Oversee and conduct the day-to-day administrative business of ATACH, in consultation with the SG;
- Appoint co-conveners and oversee the process for appointing SG members;
- In consultation with the SG, engage the different constituencies represented in the SG and facilitate the selection of a constituency representative to sit in the ATACH SG;
- Review applications to participate in ATACH, which shall include conducting due diligence and risk assessment on applications if non-State actors, corresponding with all applicants and confirming admission of all new members;
- Facilitate the development of the ATACH strategy including through a consultative process with the SG. External partners may be contracted to develop the strategy;
- Based on country needs and requests for support, develop the workplan of ATACH for approval by the SG;
- In consultation with the SG, lead periodic reviews of the role, functioning and impact of the ATACH platform, and consider and approve amendments to the Terms of Reference, as appropriate, with a view to improving the functioning of ATACH;

Assessment of Country Needs

- Collect inputs from countries to assess country needs and priorities for the implementation of their climate change and health priorities, including reflecting the COP26 Health Programme, the COP27 Initiative on Climate Action and Nutrition (I-CAN), the COP28 Declaration on Climate and Health and the WHA Resolution on Climate Change and Health;
- Collect information on technical partners' country support initiatives and share it through the relevant platforms and communications, including the ATACH Community of Practice;
- Contribute to regional meetings of ATACH and other relevant meetings/events, and represent ATACH in meetings and conferences where appropriate.

Advocacy, communications and events

- Publish an agenda of events in the Community of Practice, including ATACH events and events for ATACH engagement;
- Identify and encourage high-level champions of climate change and health (e.g. Ministers of Health, Ministers of Environment, heads of national delegations to the UNFCCC, public figures) to raise awareness and political outreach on ATACH priorities in different health, climate change and sustainable development mechanisms;
- In consultation with SG and task team leads, develop and regularly update key messages on CCH for use of ATACH members;
- Facilitate the development of specific key messages by the leads of task teams;
- Plan and organize the ATACH General Meeting, including coordinating the preparation and distribution of documentation for the General Meeting (e.g. agenda, meeting reports, publications) and leverage contributions by ATACH members;
- Organize and facilitate bi-annual Steering Group meetings;
- Develop and implement a communications and stakeholder engagement strategy for ATACH;
- Promote ATACH outputs and activities, including through public-facing communications like the ATACH newsletter.

Knowledge Sharing

- Maintain and regularly update the ATACH website (hosted by WHO) and the ATACH Community of Practice website, including developing relevant website content with member input;
- Coordinate correspondence with ATACH members, as required, to facilitate participation and collaboration of all members in knowledge sharing activities;
- Develop and continually update a central repository of information and documents relevant to ATACH;
- Support in the development and functioning of task teams and the organization of technical meetings, including coordination between the task teams.

Monitoring

- Prepare an annual update report on progress by ATACH (including progress by task teams, by countries and support provided by partners) for consideration of the SG;
- Monitor and evaluate activities and processes of ATACH, making amendments as necessary, in consultation with the Steering Group, to optimize overall Alliance functioning and impact.

High-level supporters (ATACH champions)

ATACH Champions will advocate on behalf of ATACH and promote its key messages and objectives, while ensuring scientific accuracy and credibility.

Responsibilities of high-level supporters may include:

- Participate in the ATACH General Meeting and other relevant high-level engagements as a representative of ATACH (e.g. COP, UN Secretary General Assembly);
- Facilitate and attend meetings with other high-level representatives;
- Communicate about ATACH through relevant channels (e.g., social media, press, etc.).



Appendix B:

ATACH 2024–2026

workplan

Based on the outcomes of the ATACH General Meeting in March 2024, and on identified country needs and priorities in climate and health action, a new ATACH Workplan has been developed for the 2024–2026 period. It includes key activities and deliverables which will be developed by the ATACH Secretariat and Members to support countries in implementing climate and health work.

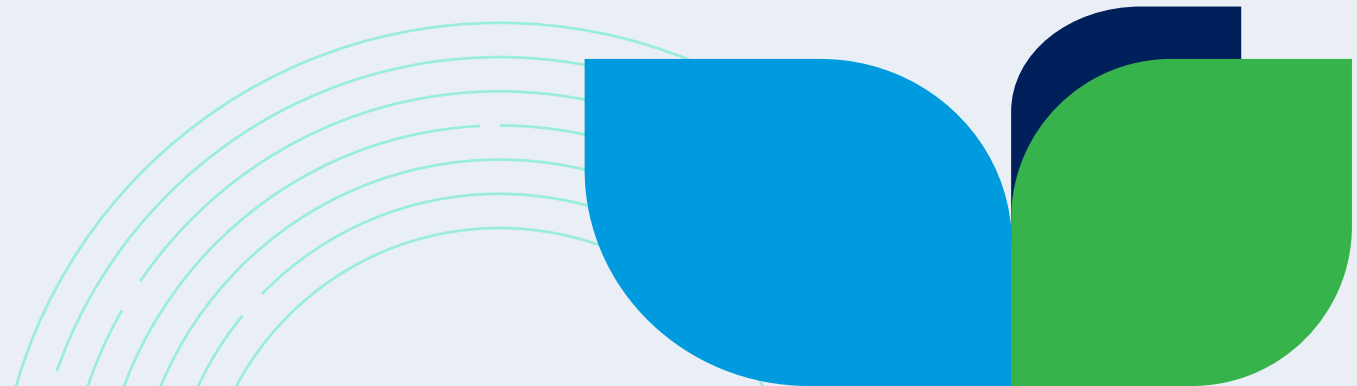
This version will be updated to reflect new developments in the work of ATACH, including timelines for activities and deliverables, as well as ATACH Members engaged in specific task teams.

Full workplan can be downloaded [here](#).






Appendix C:





ATACH Theory of change



ATACH Theory of change

Problem	 Objectives	 Functions	 Outcomes	 Impact
<p>Climate change is already impacting population health, including via impacts to key health-determining sectors. This compromises health systems' ability to protect and promote health. Meanwhile, health systems contribute to a sizable proportion of global GHG emissions, exacerbating the impacts of climate change. Investment and efforts (both adaptation and mitigation) are needed to address these challenges.</p>	<p>Health systems shift priorities to reduce risks to health from climate change. They are equipped to take action and do so in coordination with other actors and sectors.</p>	<p>ATACH supports countries' needs and activities to ensure they meet the climate and health commitments. Certain activities are performed within each function.</p>	<p>ATACH activities lead to policy outcomes and shared tools enabling countries to meet CCH commitments and priorities.</p>	<p>Country-level action drives measurable improvements in health systems' climate resilience and low-carbon sustainability, and improved global health outcomes.</p>
<p>Key barriers</p> <p>Insufficient cross-sectoral political will to protect and promote health and strengthen the climate resilience and low-carbon sustainability of health systems.</p> <p>Weak coordination and alignment of efforts among CCH actors at all scales.</p>	<p>Objective 1: Advocate for and enable concrete, ambitious commitments and priorities on climate change and health in the health sector and health-determining sectors.</p> <p>Objective 2: Promote information sharing and partnership building among actors and sectors to facilitate coordination and alignment of CCH efforts.</p> <p>Objective 3: Support countries to deliver on CCH priorities by facilitating access to required financial and technical support, and by promoting evidence-based best practices, knowledge and innovative solutions.</p>	<p>Function 1: Influencing shifts in global cross-sectoral climate and health policy through countries' and CCH actors' collective power.</p> <p>Function 2: Promoting and facilitating alignment, coherence and collaboration between CCH actors and initiatives, and health-determining sectors.</p> <p>Function 3: Identifying financing needs, breaking down the barriers, and supporting countries – particularly middle- and low- income countries – to access finance for climate and health interventions.</p>	<p>Outcome 1: A shift in international policy and programming which places climate and health as a priority for action among and within countries.</p> <p>Outcome 2: Alignment and collaboration between CCH actors and initiatives, and other relevant sectors.</p> <p>Outcome 3: Funding and investment for climate and health made available and accessed by countries.</p>	<p>Improved adaptation and resilience of health systems to climate change</p> <p>Stronger evidence-based tools, shared knowledge, technical know-how, and increased funding access enable health systems to adapt faster and more effectively to climate change-related threats.</p> <p>Reduced GHG emissions from health systems</p> <p>Evidence-based tools, robust monitoring, and sufficient funding for technological advancements result in measurable emission reductions across health sector sources, including supply chains. While net or near net-zero emissions are attainable in some cases, low-carbon health systems will be more realistic for others. Reduced global emissions from the health sector lead to improved health outcomes on a widespread scale.</p>

ATACH Theory of change (continued)

	 Objectives	 Functions	 Outcomes	 Impact
<p>Key barriers</p> <p>Inadequate availability and/or lack of capacity, access to finance, knowledge and tools by countries.</p> <p>No systematic approach to measure collective progress towards climate-resilience and low-carbon sustainability in health systems.</p>	<p>Objective 4:</p> <p>Track and measure collective progress towards CCH commitments and priorities (with a focus on CRHS and LCSHS) through standardized approaches.</p>	<p>Function 4:</p> <p>Identifying and collectively addressing gaps in knowledge responding to country needs, and creating a platform to build capacity, share experiences, expertise, and technical assistance.</p> <p>Function 5:</p> <p>Tracking and measuring the collective impact and progress of ATACH in supporting implementation of commitments and priorities at country level.</p>	<p>Outcome 4:</p> <p>Capacity, evidence, guidance and tools required by countries to implement their CCH priorities are available from a growing and dynamic Community of Practice.</p> <p>Outcome 5:</p> <p>Progress made by ATACH members and ATACH collectively towards climate change and health action.</p>	<p>Health protected and promoted in the face of climate change through cross-sectoral collaboration</p> <p>As resilience of health systems increases, and health systems lower emissions, overall capacity of health systems to protect and promote health in the face of climate change increases. Other health determining sectors integrate health within their adaptation and mitigation policies and actions, also contributing to promoting and protecting health.</p>



ATACH
Alliance for Transformative
Action on Climate and Health



**World Health
Organization**